

## BENEFITS AND KEY ACHIEVEMENTS

# Marine Estate Management Strategy



Stage 1 – 2018 – 2020

\$45.7 MILLION

Marine Estate Management Authority



The NSW Government's 10-year Marine Estate Management Strategy is a whole of government collaborative program and the centrepiece of the NSW marine estate reforms program.

## BENEFITS TO COMMUNITY AND INDUSTRY

### THE MARINE ESTATE IS INTEGRAL TO THE STATE'S COASTAL-BASED LIFESTYLE AND ECONOMY

**\$2.75 billion**



The health of the marine estate underpins a \$2.75 billion coastal economy.

**1 million**  
recreational fishers



There are 1 million recreational fishers in NSW, the majority of whom fish in the marine estate, **generating an economic benefit of \$3.4 billion annually** and revenue to NSW of approximately \$15 million per annum via recreational fishing licence sales.

**THE INDUSTRY ALSO CREATES THE EQUIVALENT OF AROUND 14,000 FULL-TIME JOBS.**

**6,225**  
vessel visits to  
NSW ports annually



NSW is the largest cruise vessel destination in Australia, at an estimated industry value of \$2.9 billion for the NSW economy. A key driver of visitation is the natural beauty and health of NSW coastal waters and harbours.

**2 million**  
recreational boating



Each year more than 2 million people head out on the water on boats and other watercraft to enjoy the sun, catch a few fish or to spend time with family and friends. About 54% of boating trips relate to recreational fishing. There are approximately 240,000 registered recreational vessels and over 500,000 boat and personal watercraft licences

**5.1 million**  
people in the Greater  
Sydney region



Approximately 5.1 million people live in the Greater Sydney region (12,368 km<sup>2</sup> in size), equating to about 412 people per square kilometre.

**6.3 million**  
people live  
along the coast



82% of the NSW population live along the NSW coastline.

**\$70 million**  
aquaculture

**\$90 million**  
wild caught  
commercial fisheries



NSW is well known as a safe source of locally caught seafood, with millions generated each year via international and national tourism focused on seafood consumption via the Sydney Fish Markets and regional fisheries cooperatives and retail outlets.

The estimated value at first point of sale of wild caught commercial fisheries in NSW is nearly \$90 million annually and \$70 million for marine and estuarine aquaculture (with direct and indirect outputs of between \$662 million added value each year)

**SUPPORTING AROUND 5,600 FULL-TIME JOBS ACROSS NSW.**

**\$6.5 billion**  
trade & tourism



\$6.5 billion is contributed annually to the NSW economy from the major ports via trade and tourism.



## STRATEGY INTENDED OUTCOMES



**Initiative 1** **Improving water quality and reducing litter** • improved water quality and waterway health, including a reduction in input litter to the marine estate, in alignment with community values  
• maintained or improved biodiversity and marine habitats



**Initiative 2** **Delivering healthy coastal habitats with sustainable use and development** • improved design and management of foreshore and coastal land use and development, balancing social and economic benefits of development with enhanced coastal and marine habitat • maintained or improved biodiversity and marine habitats



**Initiative 3** **Planning for climate change** • adaptation planning, strategies and decision making across the marine estate incorporates the likely future impacts of climate change



**Initiative 4** **Protecting the Aboriginal cultural values of the marine estate** • improved Aboriginal satisfaction with Sea Country management • Aboriginal people derive greater economic benefit from the marine estate • the broader NSW community has a greater appreciation of the significance of Sea Country for Aboriginal people



**Initiative 5** **Reducing impacts on threatened and protected species** • improved or maintained conservation status and health of targeted threatened and protected species in the wild



**Initiative 6** **Ensuring sustainable fishing and aquaculture**  
• improved ecological sustainability, economic viability and community wellbeing relating to fishing and aquaculture in the marine estate



**Initiative 7** **Enabling safe and sustainable boating** • boating provides increased social and economic benefits for NSW communities while supporting sustainable social, economic, cultural and environmental benefits of the marine estate



**Initiative 8** **Enhancing social, cultural and economic benefits** • improved social, cultural and economic benefits of the marine estate that contribute to the wellbeing of the NSW stakeholders and community • increased stakeholder and community adoption of safe and sustainable use of the marine estate



**Initiative 9** **Delivering effective governance** • improved coordination, transparency, consistency and inclusiveness of managing the marine estate • improved efficiency and effectiveness in managing the marine estate

## STAGE 1 ACHIEVEMENTS

### Water quality and litter

#### OYSTER REEF RESTORATION



**3,300 tonnes** of rock and **180 m<sup>3</sup>** of shell substrate to rehabilitate 1 ha oyster reef  
Port Stephens-Great Lakes Marine Park



**110+ km** of riverbank vegetation rehabilitated to improve water quality



#### MONITORING

over **160** estuaries measured for water quality and ecosystem health.  
Working with councils & community

**\$11 m+**

contracted for on-ground works



erosion control works on **50** macadamia orchards on the North Coast to reduce on-farm sediment run-off into waterways



**\$27 m**

REDUCING WATER POLLUTION



#### MARINE LITTER CAMPAIGN

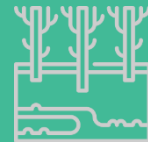
working with community to raise awareness about impacts of litter on the marine environment



**57 ha** of riverbanks planted with native species



**206 ha** of riverbank protected by fencing



**3.8 km** of riverbank stabilised to reduce erosion and sediment entering waterways



**300 ha**

of coastal wetland now protected



**>15 km** of gravel roads sealed at **49** sites to reduce pollutants and erosion entering coastal waterways



#### RISK-BASED FRAMEWORK

consulted with **30** coastal councils and provided **\$400,000+** to implement a risk-based framework that improves water way health

## Delivering healthy coastal habitats



**DREDGING AUDIT**  
completed



**COASTAL DESIGN GUIDELINES**  
prepared for exhibition in 2020



### COASTAL FLOODPLAIN STUDY

**700+** floodgate structures on coastal floodplains  
assessed for threats to water quality

**880** soils samples tested



### IMPROVING FISH PASSAGE

works progressing on  
high priority sites in the  
Hunter and Richmond  
catchments



### FIRE DAMAGE MAPS

to mangroves and saltmarshes completed for  
Wallis Lake, Clyde River and Narrawallee Inlet

## Planning for climate change



**seagrass, mangrove  
and saltmarsh maps**  
finalised for Botany Bay

### CLIMATE CHANGE MONITORING



early warning signs identified: size and  
spread of kelp and coral; fish diversity;  
distribution of sea urchins



## Protecting aboriginal cultural values of the marine estate



**100** Aboriginal people  
trained, and obtained their  
boat licence



**200** primary school students participated in the Sea  
Country School Education Program on the South Coast



### REVIVING TRADITIONAL CULTURAL PRACTICES

making boats and nets, Elders sharing  
knowledge with school children on the  
South Coast



## Reducing impacts on threatened and protected species



**~400** people trained  
in marine wildlife  
strandings and  
entanglements



**ENGAGED WITH FISHING INDUSTRY**  
to reduce wildlife interactions with  
threatened and protected species



monitoring of turtle  
nests and hatching  
on the North Coast



**9** threatened seahorse  
hotels installed in  
Sydney Harbour



**COMMERCIAL FISHING  
OBSERVER PROGRAM**  
**545** days • **6** wildlife interactions



**FABRICATION OF MARINE  
WILDLIFE RESCUE GEAR**  
including dolphin slings, turtle mats  
and satellite tracking buoys for  
entangled whales



**80** vets trained in marine  
wildlife to improve survivorship  
and understanding of threats

## Sustainable fishing and aquaculture



**40+**  
Master fisherman  
graduates  
completed training



**TIDE TO TIP CAMPAIGN**



**500** kg waste removed  
in oyster industry clean up



**2,500** juvenile kingfish released in  
Lake Macquarie, **6,500** in Botany Bay



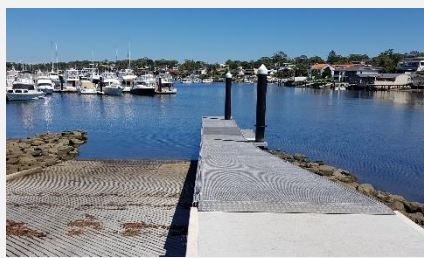
**NSW FISHERIES HARVEST STRATEGY**  
draft guidelines developed addressing threats  
from harvest & bycatch from high risk fisheries



**SUPPORTING SEAFOOD FUTURES PROGRAM**  
**\$1m** in grants for marketing and promoting  
NSW seafood and the NSW seafood industry



## Enabling safe and sustainable boating



### NSW BOATING NOW PROGRAM

**\$28m** round 3 funding available for maritime infrastructure and facilities needed across NSW for safe, accessible and enjoyable recreational and commercial boating.

**200+** projects delivered since the program was launched



**2,300+** domestic commercial vessel inspections undertaken for safety and environmental standards



**4** hybrid environmentally friendly moorings installed at Shoal Bay. Trialling innovative moorings to protect sensitive seagrass communities while keeping boaters safe



Released  
**MARITIME INFRASTRUCTURE PLAN 2018-2028**  
to guide future investments in maritime infrastructure

## Enhancing social, cultural and economic benefits



**COMMUNITY WELLBEING FRAMEWORK**  
developed to guide the strategic collection of social, cultural & economic data



**MARINE EDUCATION STRATEGY**  
draft developed



**MARINE INTEGRATED MONITORING & EVALUATION FRAMEWORK**  
completed to track the Strategy's success



**100+** jobs created  
**70+** in regional NSW  
**22** Aboriginal rangers employed

## Delivering effective governance



**cross-agency governance structure**  
developed with over 100 projects implemented and reported on quarterly



**Richmond River catchment governance** reviewed, new structure to be implemented based on report findings