



Ecosystems of the NSW marine estate





Estuaries



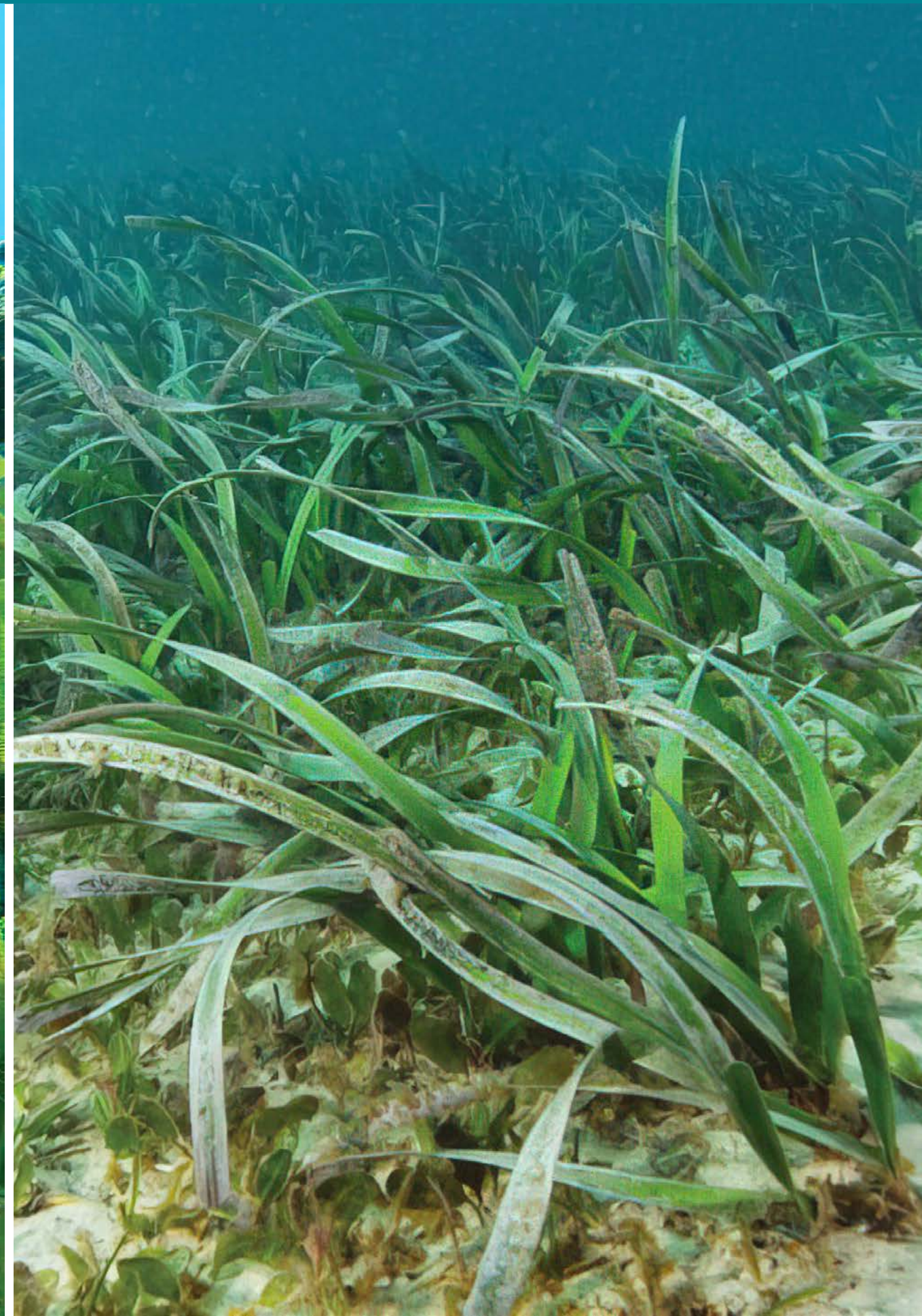


Mangrove forest





Seagrass beds





Saltmarshes





Coastal dunes and beaches





Open ocean





Rocky shore



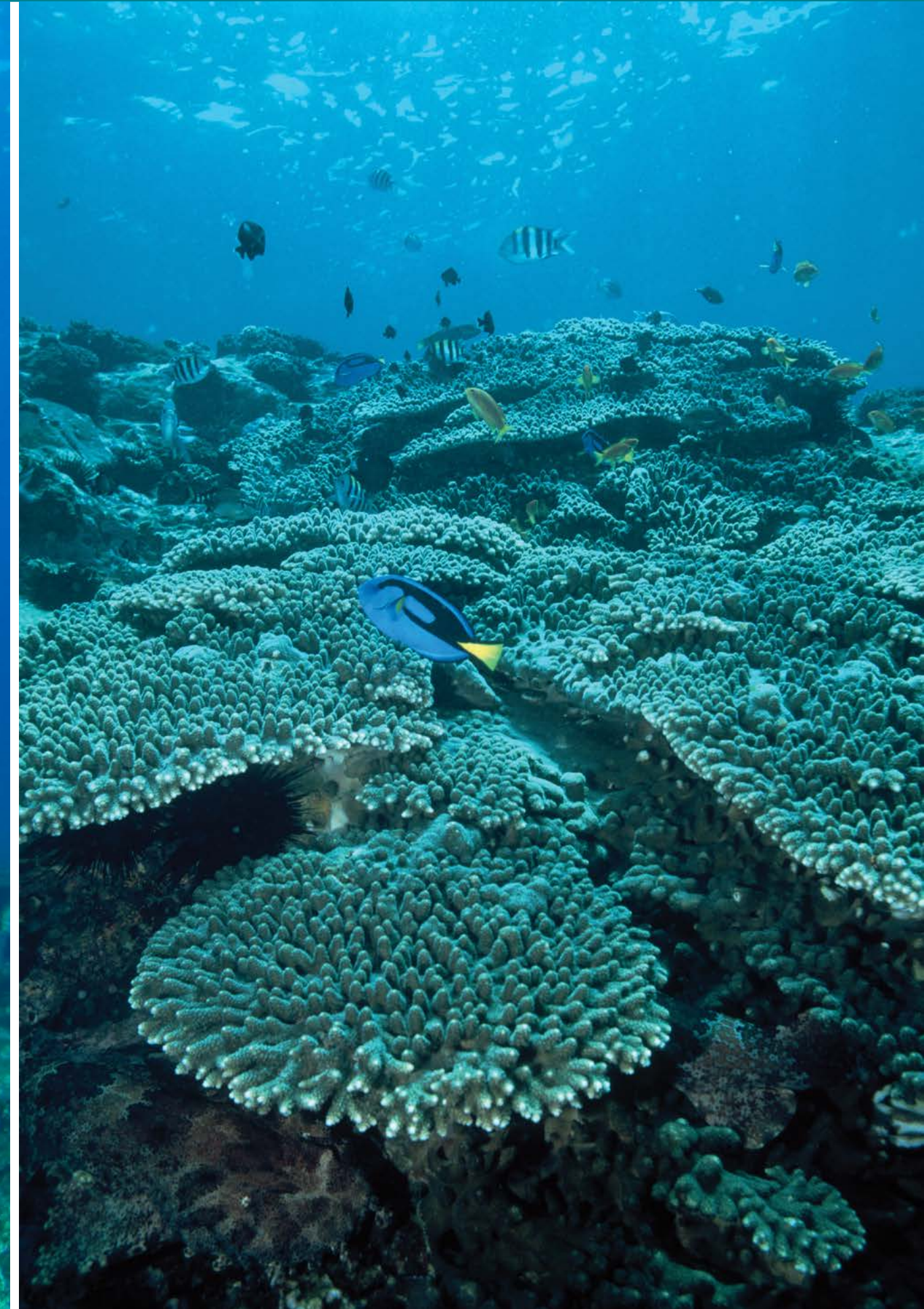


Oyster reefs





Rocky and coral reefs





Acknowledgements



White-bellied sea eagle swoops on prey at Shark Bay, Bundjalung National Park
Jessica Robertson/DPE



Mature and young mangrove trees
Kelly Coleman/PeeKdesigns



Washed up seagrass and shells on a beach
Kelly Coleman/PeeKdesigns



Tanilba Bay oysters
Kelly Coleman/PeeKdesigns



Beach stone-curlew in mangroves
Bret Vercoe



Halophila ovalis seagrass
Geoff Kelly/DPI



Sunrise behind cloud at Port Macquarie
Peter Sherratt/DPE



Reef
Hamish Malcolm



Humpback whale
Bret Vercoe



Posidonia australis seagrass



Humpback whale off Coffs Harbour
Kelly Coleman/PeeKdesigns



Solitary Islands Marine Park
Ian Shaw



Newcastle Harbour
John Spencer/DPE



Mangrove and saltmarsh



Rock platforms by Dudley Beach within Glenrock State Conservation Area
John Spencer/DPE



Wagonga Inlet
Kelly Coleman/PeeKdesigns



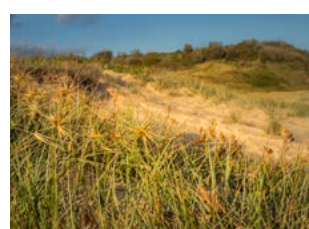
Samphire and pigface growing in a saltmarsh



Low tide at Munmorah State Conservation Area
John Spencer/DPE



Edge of a mangrove forest at low tide, Tilligerry Creek estuary
Kelly Coleman/PeeKdesigns



Sand dune vegetation
Kelly Coleman/PeeKdesigns



Fish in oyster reef
Shane Chalker/DPI

© State of New South Wales through the Department of Regional NSW, 2023.

This resource has been prepared for schools. You may copy, distribute, display, download and otherwise freely deal with this publication for any purpose, provided you attribute the Marine Estate Management Authority as the owner.