
RESPONSE TO THE INDEPENDENT SCIENTIFIC AUDIT OF MARINE PARKS IN NSW

A new approach to managing the NSW marine estate

Factsheet

March 2013

Background

- The NSW Government commissioned an Independent Scientific Audit of Marine Parks in NSW in May 2011 to explore stakeholder concerns about the effectiveness of marine park establishment, zoning, access and science, and ways to achieve better management of the NSW marine estate.
- The Audit found that management of the marine estate is generally fragmented and deficient, and that significant reform is needed and will take time.
- The government's vision is for a clean, safe, healthy, biologically diverse and productive NSW marine estate, enjoyed, valued and sustainably managed to balance economic growth and environmental protection and deliver long term benefits to NSW, its people, regions and industries.

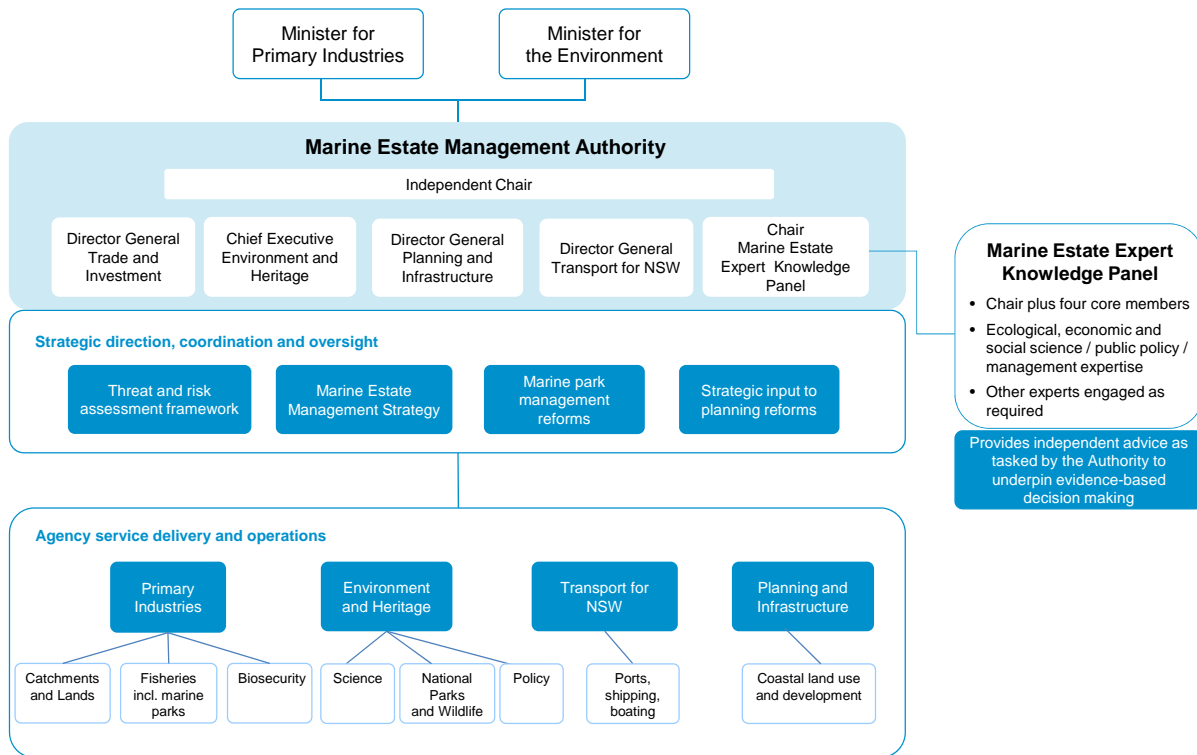
What are we doing in response to the Report of the Independent Scientific Audit of Marine Parks in NSW?

- The NSW Government accepts the Audit's two principle recommendations to reorganise management of the marine estate under a single new authority and establish an independent scientific committee to support evidence based decision making, as cornerstones of the new approach to marine estate management in NSW.
- The further 16 recommendations including 54 specific actions for improved management of the marine estate encompassing the existing six marine parks will be progressively prioritised and addressed.

Table 1 Key components of the new approach to managing the NSW marine estate

Governance bodies		Role
1. Establish a Marine Estate Management Authority		To set the strategic framework and priorities for management of the entire marine estate by service delivery agencies
2. Establish an independent Marine Estate Expert Knowledge Panel		To provide expert advice to the Authority on key knowledge needs and support evidence based decision making
Key initiatives		Purpose
3. Develop a threat and risk assessment framework		To guide the assessment of threats and risks to the marine estate and prioritisation of management actions to effectively address them
4. Develop a Marine Estate Management Strategy		To define objectives for management of the NSW marine estate, and prioritise actions over the next decade
5. Develop marine park management reforms		To improve marine park management, including the objectives of and approach to multiple use zoning, the incorporation of economic and social evaluation, and community and stakeholder engagement and communications

Figure 1 NSW marine estate governance bodies and roles



How long will these initiatives take?

A transitional approach to implementing the reforms has been adopted as envisaged by the Audit, recognising that the scale of these changes will require sufficient time to put into effect. The NSW Government’s timetable for implementing the new approach to management and zoning of each marine park will be informed by assessment of threats and risks.

Will the marine parks moratorium continue?

The NSW Government remains committed to the current moratorium on declaring new marine parks, pending advice from the Expert Knowledge Panel.

The parts of the moratorium prohibiting zoning reviews and changes to sanctuary zones will need to be lifted prior to September 2016 to allow progressive implementation of the reforms, following advice from the Marine Estate Management Authority and Expert Knowledge Panel.

More information

The NSW Government has already selected chairpersons to drive the new approach and is calling for expressions of interest for the remaining Expert Knowledge Panel positions.

A Beaches and Headlands Factsheet is available explaining the beach assessment and amnesty on compliance action regarding recreational line fishing from marine park sanctuary zones.

For news, updates and to download the full Government response please visit www.marine.nsw.gov.au.

© State of New South Wales through the Department of Trade and Investment, Regional Infrastructure and Services 2013. You may copy, distribute and otherwise freely deal with this publication for any purpose, provided that you attribute the NSW Department of Primary Industries as the owner.

Disclaimer: The information contained in this publication is based on knowledge and understanding at the time of writing (March 2013). However, because of advances in knowledge, users are reminded of the need to ensure that information upon which they rely is up to date and to check currency of the information with the appropriate officer of the Department of Primary Industries or the user’s independent adviser. Published by the Department of Primary Industries, a division of NSW Department of Trade and Investment, Regional Infrastructure and Services. OUT13/5612 JobTrack 11542