



The marine estate



What is the marine estate?

The NSW marine estate extends from the Queensland border to the Victorian border and includes:

- the ocean (out to three nautical miles)
- estuaries (to the tidal limit)
- coastline – beaches, dunes and headlands
- coastal wetlands – saltmarsh, mangroves, seagrass
- coastal lakes and lagoons connected to the ocean
- islands, such as Lord Howe Island.

The NSW marine estate covers:

- around one million hectares of estuary and ocean, including 1,750 km of ocean coastline
- 6,500 km of estuarine and coastal lakes foreshores
- 826 beaches and 185 estuaries and coastal lakes.

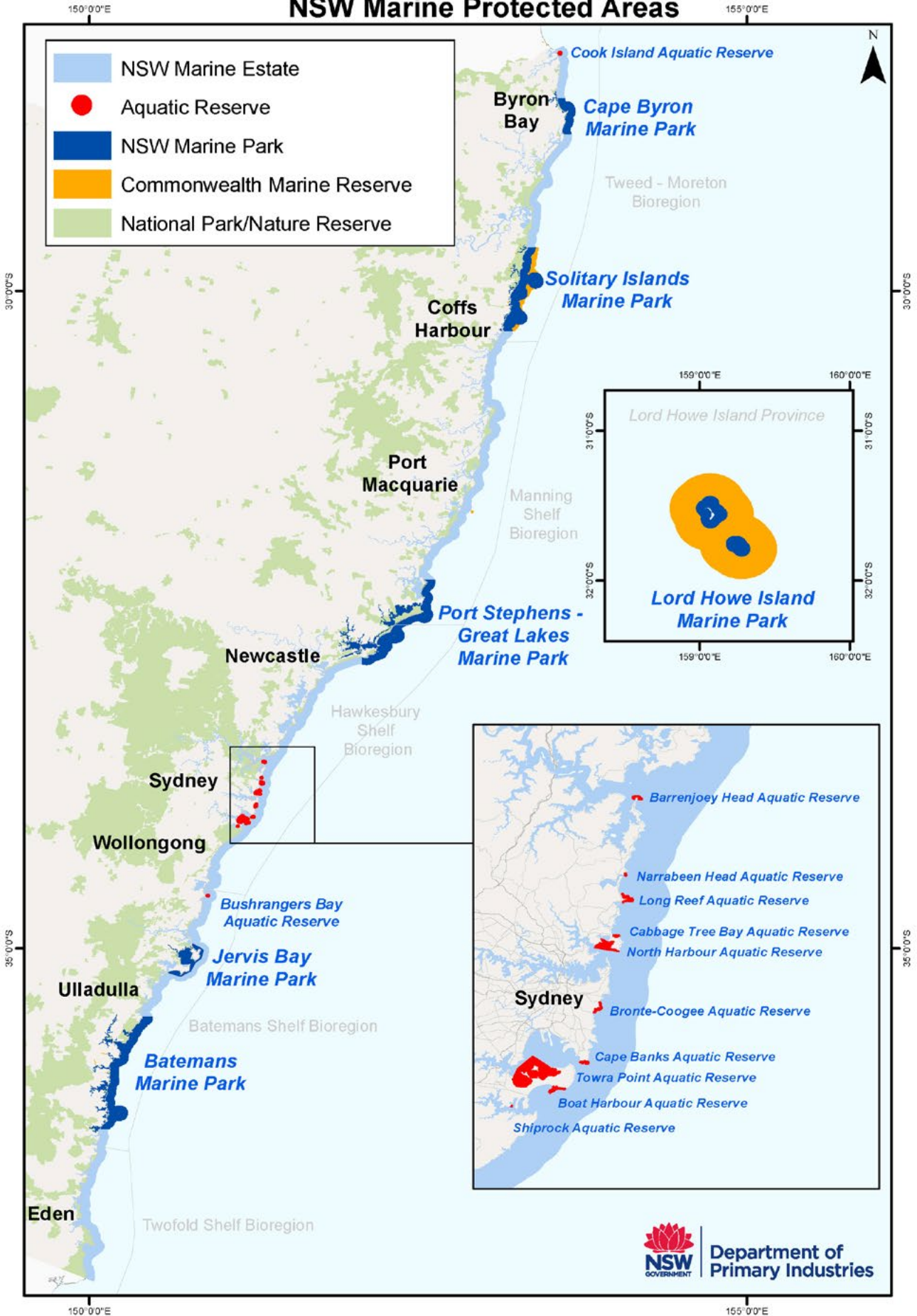
Everyone shares and benefits from these areas and the marine life they support, such as:

- enjoying a walk or a swim at the beach
- going surfing, fishing, boating, snorkelling or diving
- deriving an income through tourism, fishing or shipping
- practising traditional cultures
- appreciating nature.

Beowa National Park (John Spencer/DPE)



NSW Marine Protected Areas



Looking after the marine estate

The marine estate contributes to our health and well-being and therefore it is critical these areas are well-managed for the whole community.

A range of government agencies departments, non-government organisations, businesses and community groups work together to look after the marine estate. They aim to protect these benefits now and into the future while maintaining a balance between different uses.

There are many jobs, or roles, people have to help look after different parts of the marine estate. This includes people who look after the fish and other ocean life, boat harbours, parks and reserves and significant historical sites. There are educators, scientists, rangers, compliance officers, tourism operators and many more.

We can all help look after the marine estate every time we visit. Simple actions such as picking up litter all contribute to keeping our marine estate healthy for the whole community.



Right: National Park Ranger and Aboriginal Ranger.
Below: School students showcasing their Return and Earn project

